



outdoorkitchens

**CATALOGO TECNICO 2023**  
*Technical Catalogue 2023*  
**CATÁLOGO TÉCNICO 2023**  
*Catalogue Technique 2023*

**MODULARITÀ MADE IN ITALY**  
*Made in Italy Modularity*  
**MODULARIDAD MADE IN ITALY**  
*Modularité Made in Italy*



# outside<sup>®</sup>

**DIAMO NUOVA VITA AGLI SPAZI OUTDOOR.**

*We give new life to outdoor spaces.*

**DAMOS UNA NUEVA VIDA A LOS ESPACIOS EXTERIORES.**

*Nous donnons une nouvelle vie aux espaces extérieurs.*

**2023**



# Indice *Index* Índice *Index*

<b>Cucine da esterno</b> <i>Outdoor kitchens</i>	6
<b>Cocinas de exterior</b> <i>Cuisines d'extérieur</i>	
<b>Dati di mercato</b> <i>Market data</i>	10
<b>Datos de mercado</b> <i>Données de marché</i>	
<b>Produzione e servizio</b> <i>Production and service</i>	12
<b>Producción y servicio</b> <i>Production et service</i>	
<b>Modularità sistema OF</b> <i>OF Modularity system</i>	16
<b>Modularidad sistema OF</b> <i>Modularité du système OF</i>	
<b>Composizioni predefinite o modulabili</b> <i>Predefined or modular compositions</i>	46
<b>Composiciones predefinidas o modulares</b> <i>Compositions prédéfinies ou modulables</i>	
<b>Ispirazione per i nostri clienti</b> <i>Inspiration for our customers</i>	52
<b>Inspiración para nuestros clientes</b> <i>Compositions prédéfinies ou modulables</i>	



## Design

**IT** Linearità ed eleganza, design d'avanguardia e funzionalità. La durevolezza dell'acciaio inox si unisce alla perfezione geometrica delle linee nella creazione di soluzioni estetiche di prim'ordine.

## Design

**EN** *Linearity and elegance, cutting edge design and functionality. The durability of stainless steel combines with geometric perfection of the lines to create first-class aesthetic solutions.*

## Design

**ES** Linealidad y elegancia, diseño de vanguardia y funcionalidad. La durabilidad del acero inoxidable se une a la perfección geométrica de las líneas en la creación de soluciones estéticas de primer orden.

## Design

**FR** *Linéarité et élégance, design d'avant-garde et fonctionnalité. La durabilité de l'acier inox s'unit à la perfection géométrique des lignes dans la création de solutions esthétiques de premier ordre.*



## Libertà

**IT** I confini delle case si allargano, la vita all'aria aperta diventa confortevole. OF outdoorkitchens, con la sua ampia scelta di finiture, si adatta ad ogni tipo di ambiente e stile di vita. Non semplice cucina all'aria aperta, ma convivialità e condivisione.

## Freedom

**EN** *The boundaries of the houses widen, outdoor life becomes comfortable. OF outdoorkitchens, with its wide choice of finishes, adapts to any type of environment and lifestyle. Not just an outdoor kitchen, but conviviality and sharing.*

## Libertad

**ES** Los límites de las casas se amplían, la vida al aire libre se vuelve cómoda. OF outdoorkitchens, con su amplia gama de acabados, se adapta a todo tipo de ambiente y estilo de vida. No sólo una cocina al aire libre, sino convivir y compartir.

## Liberté

**FR** *Les limites des maisons s'élargissent, la vie en plein air devient confortable. OF outdoorkitchens, avec son large choix de finitions, s'adapte à tout type d'environnement et de style de vie. Pas simple cuisine en plein air, mais convivialité et mise en commun.*

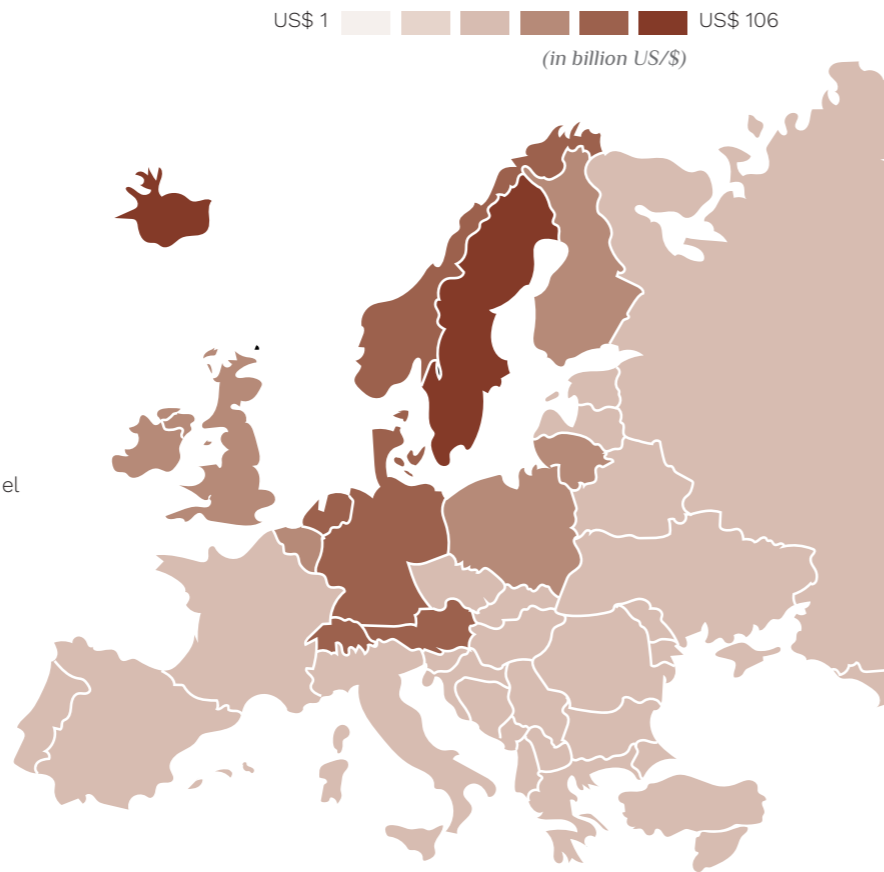
**IT** Il mercato globale dei prodotti e degli arredi per cucine da esterno è destinato a registrare una robusta crescita grazie al miglioramento delle cucine modulari di nuova generazione e alla progressione del design delle infrastrutture. La crescente domanda del mercato per lo sviluppo e la fornitura di soluzioni di stoccaggio guida l'espansione del settore, che ha un impatto sulle vendite di arredi e prodotti per cucine da esterno.

**EN** The global outdoor kitchen product & fixtures market is likely to project a robust growth owing to the current generation's improved modular kitchens and increased infrastructure design. The market's growing demand for developing and providing storage solutions drives the industry's expansion, which has an impact on the sales of outdoor kitchen fixtures and products.

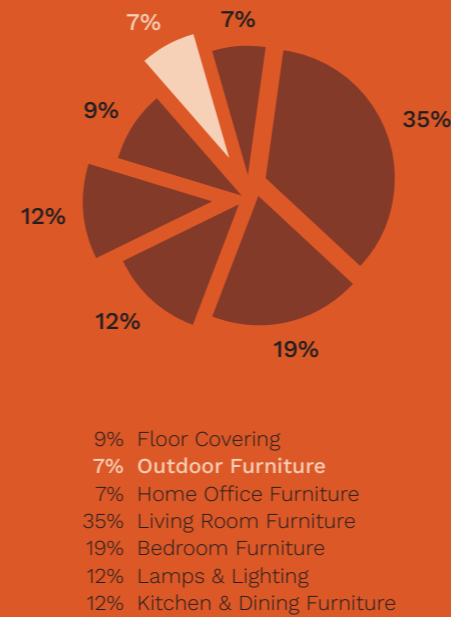
**ES** El mercado global de productos y mobiliario para cocinas de exterior está destinado a registrar un fuerte crecimiento debido a la mejora de cocinas modulares de nueva generación y a la progresión del diseño de las infraestructuras. La creciente demanda del mercado para el desarrollo y suministro de soluciones de almacenamiento impulsa la expansión del sector, lo que tiene un impacto en las ventas de mobiliario y productos para cocinas de exterior.

**FR** Le marché mondial des produits et du mobilier pour cuisines d'extérieur est destiné à enregistrer une forte croissance en raison de l'amélioration des cuisines modulaires de nouvelle génération et de la progression de la conception des infrastructures. La demande croissante du marché pour le développement et la fourniture de solutions de stockage conduit l'expansion du secteur, ce qui a un impact sur les ventes du mobilier et des produits pour cuisines d'extérieur.

**IN EUROPE, GERMANY WAS THE COUNTRY WITH THE HIGHEST REVENUE IN THE OUTDOOR FURNITURE SEGMENT**

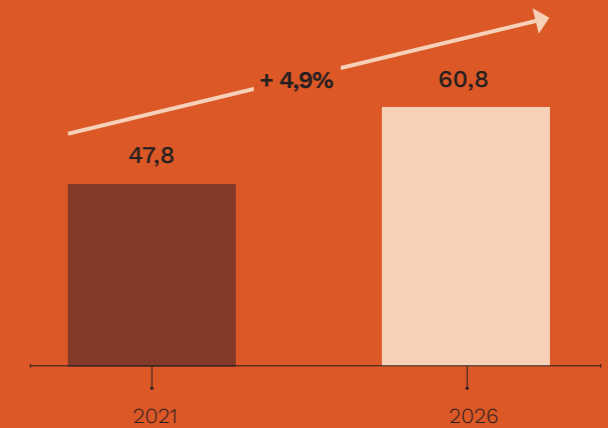


**WORLDWIDE REVENUE SHARE IN 2022**



**WORLDWIDE OUTDOOR FURNITURE SALES WILL INCREASE AT A CAGR\* OF 4,9% FROM 2021 TO 2026**

\* CAGR: Compound Annual Growth Rate / average growth rate per year  
Sources: Statista Consumer Market Outlook 2022



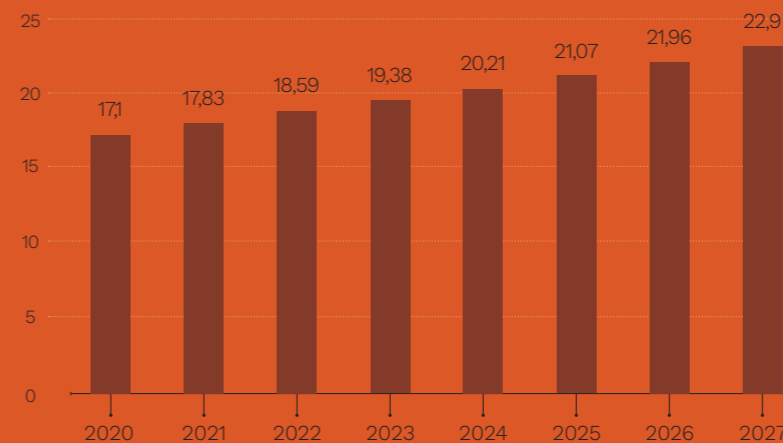
**Il Piccolo Blog**  
**Cucine da esterno, quelle in acciaio inox garantiscono resistenza e comodità**

**yahoo!finance**  
**Outdoor Kitchen Cabinets Market Size to Record USD 913.09 Mn Growth, Growing Influence of Different Retailing Channels**  
The outdoor kitchen cabinets market share is expected to increase by USD 913.09 million from 2021 to 2026, and the market's growth momentum will accelerate at a CAGR of 4.9%.

**iReportLinker**  
Summary  
Outdoor Kitchen Product & Fixtures Market - Global Industry Size, Share, Trends, Competition Forecast and Opportunities, Forecast, 2018-2028F  
Segmented By Product Type (Cooking Fixtures, Refrigeration Units, Island & Storage Units, Sinks & Faucets and Cocktail & Bar Centers), By End Use (Residential Vs. Commercial), By Distribution Channel (Online & Offline), By Region

**360 Research Reports**  
**Outdoor Kitchen Cabinets Market 2021: Driving Factors, Industry Growth Analysis, Key Vendors and Forecasts to 2027 with Dominant Sectors and Countries Data**  
Wednesday, January 18, 2023

**OUTDOOR FURNITURE MARKET VALUE WORLDWIDE FROM 2020 to 2027 (in billion US/\$)**



**PRODUZIONE  
MADE IN ITALY**  
*Made in Italy production*

**PRODUCCIÓN  
MADE IN ITALY**  
*Production Made In Italy*

**IT** Da anni Officine Fanesi produce cucine sartoriali in acciaio inox 304 o 316, posizionabili sia in indoor che in outdoor. Alla base vi è un know-how totalmente rivoluzionario, che ha dato vita ad un prodotto conveniente, semplice da gestire e accessibile a tutti: OF outdoorkitchens. Le cucine da esterno OF sono completamente Made in Italy; vengono realizzate internamente ed hanno alla base una filiera d'approvvigionamento concentrata nel territorio nazionale.

**EN** For years, Officine Fanesi has been producing 304 or 316 stainless steel tailored kitchens, which can be placed both indoors and outdoors. At the base there is a totally revolutionary know-how, which has given rise to an affordable product, simple to manage and accessible to everyone: OF outdoorkitchens. OF outdoor kitchens are completely Made in Italy; they are produced internally and they have at the base a supply chain concentrated in the national territory.

**ES** Desde hace años, Officine Fanesi fabrica cocinas a medida en acero inoxidable 304 o 316, que pueden colocarse tanto en el interior como en el exterior. En la base hay un know-how totalmente revolucionario, que ha dado lugar a un producto conveniente, fácil de gestionar y accesible a todos: OF outdoorkitchens. Las cocinas de exterior OF son completamente Made in Italy; se realizan internamente y se basan en una cadena de suministro concentrada en Italia.

**FR** Depuis des années, Officine Fanesi produit des cuisines de couture en acier inox 304 ou 316, pouvant être positionnées à la fois en intérieur et en extérieur. A la base il y a un savoir-faire totalement révolutionnaire, qui a donné vie à un produit abordable, simple à gérer et accessible à tous: OF outdoorkitchens. Les cuisines d'extérieur OF sont entièrement Made in Italy; elles sont réalisées en interne et ont à la base une filière d'approvisionnement concentrée sur le territoire national.



outside®

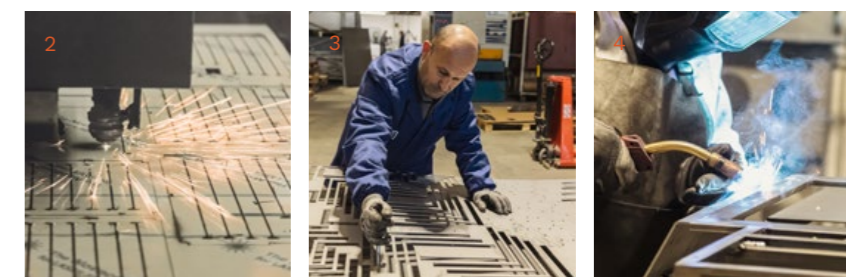
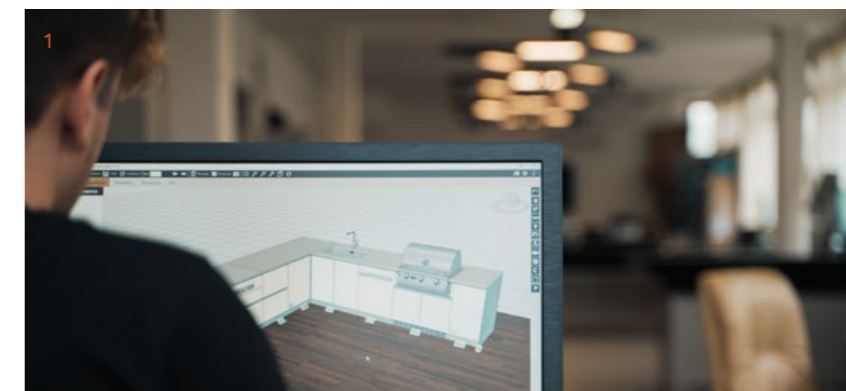


- 1 Progettazione
- 2 Taglio laser
- 3 Stacco pezzi
- 4 Saldatura
- 5 Piegatura

- 1 Designing
- 2 Laser cutting
- 3 Detaching pieces
- 4 Welding
- 5 Bending

- 1 Diseño
- 2 Corte láser
- 3 Separación de piezas
- 4 Soldadura
- 5 Flexión

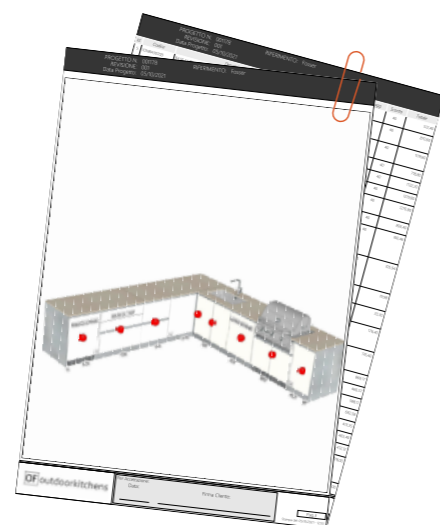
- 1 Conception
- 2 Découpe laser
- 3 Déblocage des pièces
- 4 Soudage
- 5 Pliage



**SERVIZI**  
Services

**SERVICIOS**  
Services

- **Configuratore online 3Cad**  
*3Cad online configurator*
- **Configurador en línea 3Cad**  
*Configurateur online 3Cad*
- **Formazione ai rivenditori**  
*Dealers training*
- **Formación a los revendedores**  
*Formation des revendeurs*
- **Servizio back office / Realizzazione preventivi**  
*Back office / Quote creation*
- **Servicio de back office / creación de presupuestos**  
*Service back-office / Réalisation de devis*
- **Progettazione**  
*Designing*
- **Diseño**  
*Conception*
- **Consegna e montaggio**  
*Delivery and installation*
- **Entrega e instalación**  
*Livraison et montage*
- **Assistenza post vendita e ricambi**  
*After-sales service and spare parts*
- **Servicio post venta y piezas de repuesto**  
*Service après-vente et pièces de rechange*
- **Garanzie**  
*Warranties*
- **Garantías**  
*Garanties*
- **Finanziamenti**  
*Financing*
- **Financiaciones**  
*Financements*
- **Pubblicità a livello internazionale**  
*International advertising*
- **Publicidad internacional**  
*Publicité au niveau international*



Rate su misura per te! Instalments tailored for you!  
Cuotas a tu medida! Versements à ta mesure!



\* Messaggio pubblicitario con finalità promozionale. Offerta di credito finalizzato. IEBCC nel percorso online.  
Salvo approvazione di Findomestic Banca S.p.A. per cui Tecnozeta Srl opera quale intermediario del credito, non in esclusiva.  
\* Advertising message for promotional purpose. IEBCC in the online path.  
Subject to approval by Findomestic Banca S.p.A. for which Tecnozeta s.r.l. operates as a credit intermediary, not exclusively.  
\* Mensaje publicitario con finalidad promocional. Oferta de crédito destinado. IEBCC en la vía online.  
Sujeto a la aprobación de Findomestic Banca S.p.A. para la que Tecnozeta Srl opera como intermediario de crédito, no de forma exclusiva.  
\* Message publicitaire à des fins promotionnelles. Offre de crédit finalisée. IEBCC dans le parcours online.  
Sauf approbation de Findomestic Banca S.p.A. pour laquelle Tecnozeta Srl agit en tant qu'intermédiaire de crédit, pas en exclusivité.



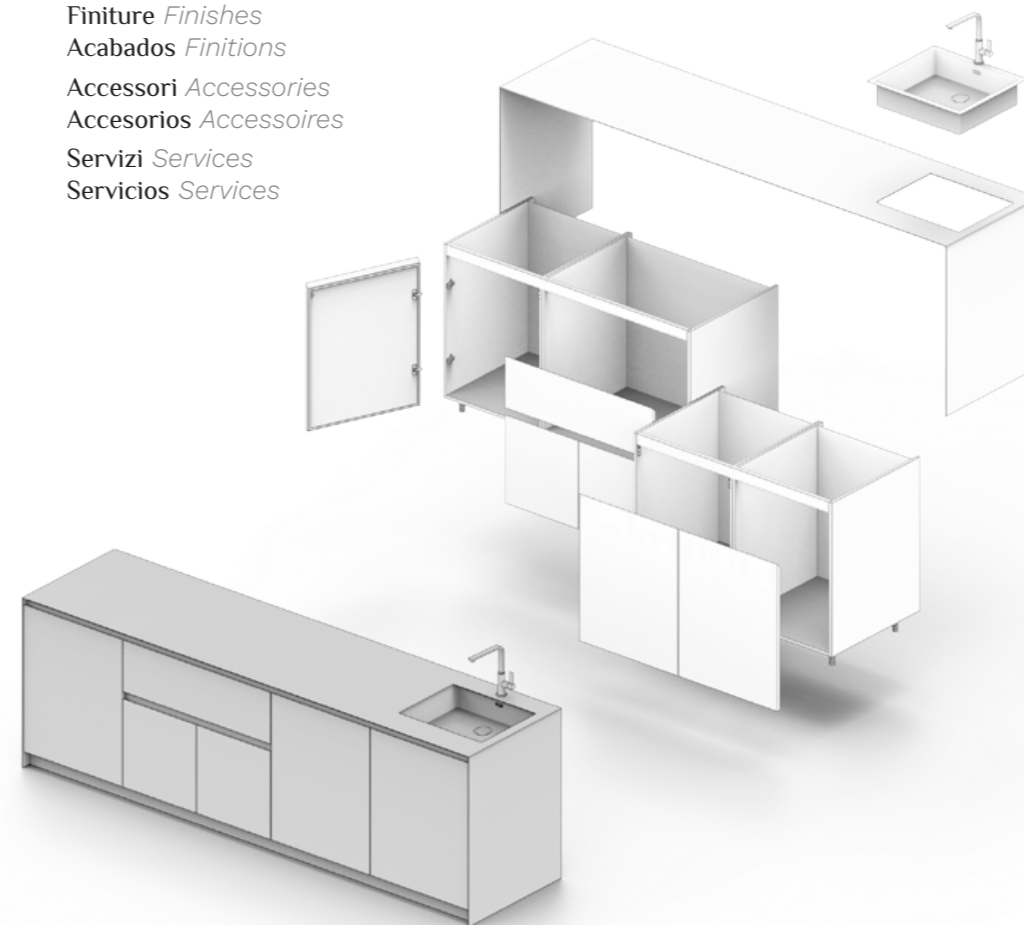


# OF Via Nolfi.



**Linguaggio di progettazione**  
*Design language*  
**Lenguaje de diseño**  
*Langage de conception*

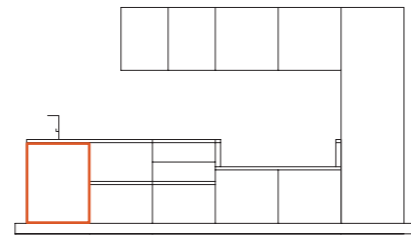
Misure *Measures*  
Medidas *Mesures*  
Finiture *Finishes*  
Acabados *Finitions*  
Accessori *Accessories*  
Accesorios *Accessoires*  
Servizi *Services*  
Servicios *Services*



**3** cad  
evolution

**Facile da fare**  
*Easy to do*  
**Fácil de hacer**  
*Facile à faire*

- 1 Seleziona le basi *Choose the cabinets*  
Elige las bases *Composez les bases*
- 2 Scegli le finiture *Choose the finishes*  
Elige los acabados *Choisissez les finitions*
- 3 Completa con gli accessori *Complete with accessories*  
Completa con los accesorios *Complétez avec les accessoires*



## ANTE

### Doors

Modelli pronti all'ordine  
Models ready to order

## PUERTAS

### Vantaux

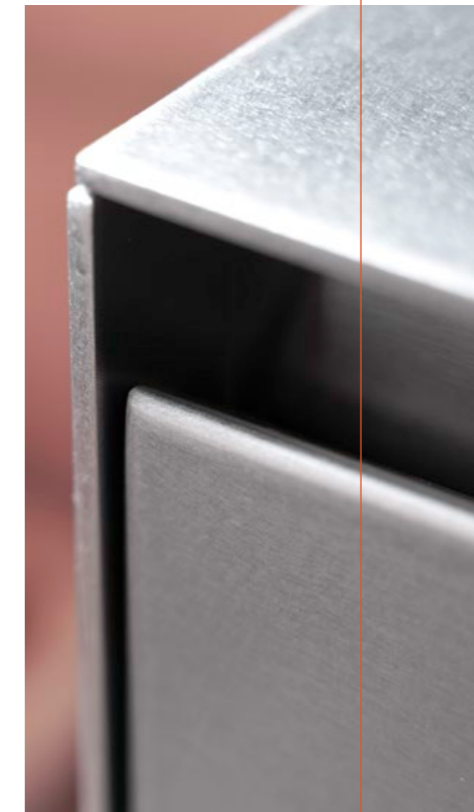
Modelos listos para pedir  
Modèles prêts à l'emploi

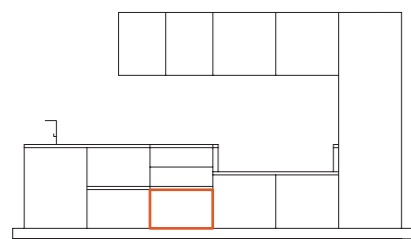
**IT** Basi ad una o due ante con  
cerniere in acciaio inox 304.

**EN** Base units with one or two  
doors with 304 stainless steel  
hinges.

**ES** Bases de una o dos puertas  
con bisagras de acero inoxidable  
304.

**FR** Bases à un ou deux vantaux  
avec charnières en acier  
inoxydable 304.





## CASSETTIERE

*Drawer units*

*Modelli pronti all'ordine*

*Models ready to order*

## CAJONERAS

*Tiroirs*

*Modelos listos para pedir*

*Modèles prêts à l'emploi*

**IT** Diverse tipologie di cassettiere, un'unica costante: l'acciaio inox. Disponibili nelle varianti con uno o due cestoni o con due cassette più un cestone, con la possibilità di aggiungere cassette interne e kit spazzatura.

**EN** *Different types of drawer units, one constant: stainless steel. Available with one or two baskets or with two drawers plus one basket, with the possibility of adding internal drawers and recycling kit.*

**ES** Diferentes tipos de cajoneras, una única constante: el acero inoxidable. Disponibles en las variantes con uno o dos cubos de basura o con 2 cajones + un cubo de basura, con la posibilidad de añadir cajones interiores y set de basura.

**FR** *Différents types de tiroirs, une constante unique: l'acier inox. Disponibles dans les variantes avec un ou deux grand tiroirs o avec 2 tiroirs + un grand tiroir, avec la possibilité d'ajouter des tiroirs intérieurs et des kits poubelle.*



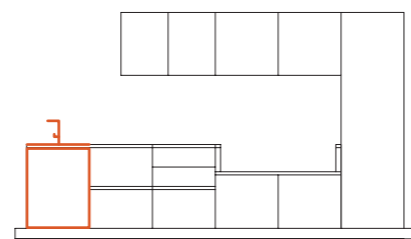
**IT** Guide per cassette in acciaio inox 304

**EN** *304 stainless steel drawer slides*

**ES** Guías para cajones de acero inoxidable 304

**FR** *Glissières de tiroir en acier inox 304*





## LAVELLI

### Sinks

Modelli pronti all'ordine  
Models ready to order

## FREGADEROS

### Éviers

Modelos listos para pedir  
Modèles prêts à l'emploi

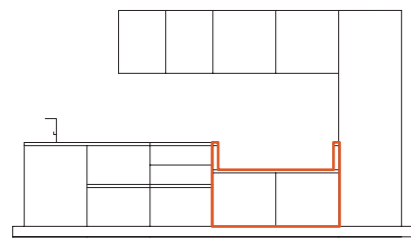
**IT** Basi con retro o senza retro studiate appositamente per contenere lavelli di dimensioni corrispondenti.

**EN** Base units with or without back panels designed specifically to fit sinks of corresponding sizes.

**ES** Bases con o sin espaldas diseñadas específicamente para contener fregaderos de dimensiones correspondientes.

**FR** Bases avec arrière ou sans arrière spécialement conçues pour contenir des éviers de dimensions correspondantes.





## MODULI BBQ

*BBQ modules*

*Modelli pronti all'ordine*

*Models ready to order*

## MÓDULOS PARA BBQ

*Modules BBQ*

*Modelos listos para pedir*

*Modèles prêts à l'emploi*

**IT** Moduli ad hoc per ogni tipo di barbecue, predisposti per bombole a gas.

**EN** Specific modules for every type of barbecue, prepared for gas tanks.

**ES** Módulos ad hoc para cada tipo de barbacoa, preparados para botellas de gas.

**FR** Modules ad hoc pour chaque type de barbecue, préparés pour les bonbonnes à gaz.



outside®



## Barbecue a Gas

*Gas Barbecue*

*Barbacoa de Gas*

*Barbecue à Gaz*





## Big Green Egg

*Big Green Egg*

*Big Green Egg*

*Big Green Egg*

**IT** Basi cestone con supporto per Big Green Egg, disponibili in diverse misure per ospitare differenti modelli.

**EN** *Basket base units with holder for Big Green Egg, available in different sizes to accommodate different models.*

**ES** Bases cesto con apoyo para Big Green Egg, disponibles en diferentes tamaños para acomodar diferentes modelos.

**FR** *Bases grand tiroir avec soutien pour Big Green Egg, disponibles en différentes tailles pour accommoder différents modèles.*



## Barbecue a Legna

*Wood Barbecue*

*Barbacoa de Leña*

*Barbecue à Bois*



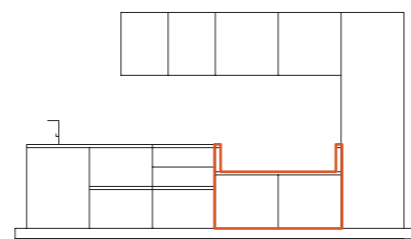
## Barbecue Elettrico

*Electric Barbecue*

*Barbacoa Eléctrica*

*Barbecue Électrique*





## MODULI BOMBOLE GRANDI

*Large tanks  
modules*

*Modelli pronti all'ordine  
Models ready to order*

## MÓDULOS PARA GRANDES BOTELLAS DE GAS

*Modules grandes  
bonbonnes*

*Modelos listos para pedir  
Modèles prêts à l'emploi*

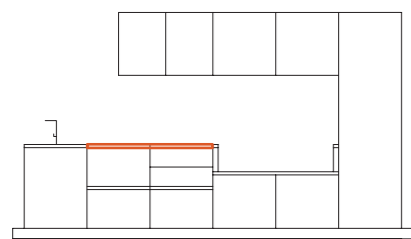
**IT** Moduli idonei al contenimento di bombole di grosse dimensioni.

**EN** *Modules suitable for containing large tanks.*

**ES** Módulos adecuados para contener botellas de gas de gran tamaño.

**FR** *Modules adaptés au stockage de bonbonnes de grandes dimensions.*





## ELETTRO DOMESTICI

*Appliances*

*Modelli pronti all'ordine  
Models ready to order*

## ELECTRO DOMÉSTICOS

*Électroménagers*

*Modelos listos para pedir  
Modèles prêts à l'emploi*

**IT** Basi e ante per elettrodomestici con garanzia sull'acquisto. La protezione contro gli agenti atmosferici è assicurata dall'impermeabilità della cassa in acciaio inox.

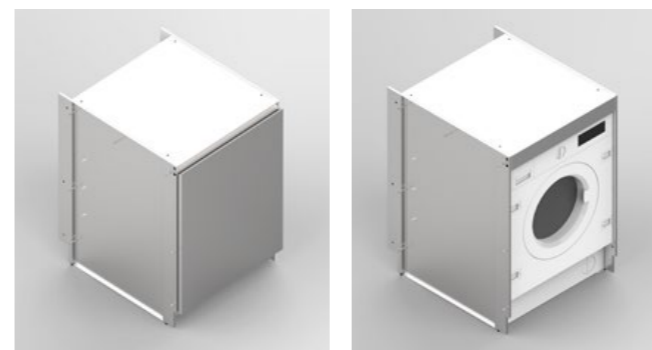
**EN** Base units and doors for appliances with purchase guarantee. Protection against atmospheric agents is ensured by the waterproofness of the stainless steel carcass.

**ES** Bases y puertas para electrodomésticos con garantía de compra. La protección contra los agentes atmosféricos está asegurada por la impermeabilidad de la caja de acero inoxidable.

**FR** Bases et vantaux pour électroménagers avec garantie sur l'achat. La protection contre les intempéries est assurée par l'étanchéité de la caisse en acier inox.



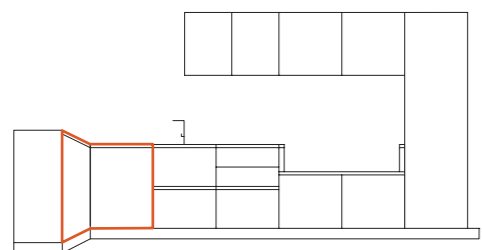
**outside**



**IT** Base lavatrice  
**EN** Washing machine base unit  
**ES** Base lavadora  
**FR** Base machine à laver







## BASI ANGOLO

*Corner base units*

*Modelli pronti all'ordine*

*Models ready to order*

## BASES ANGULARES

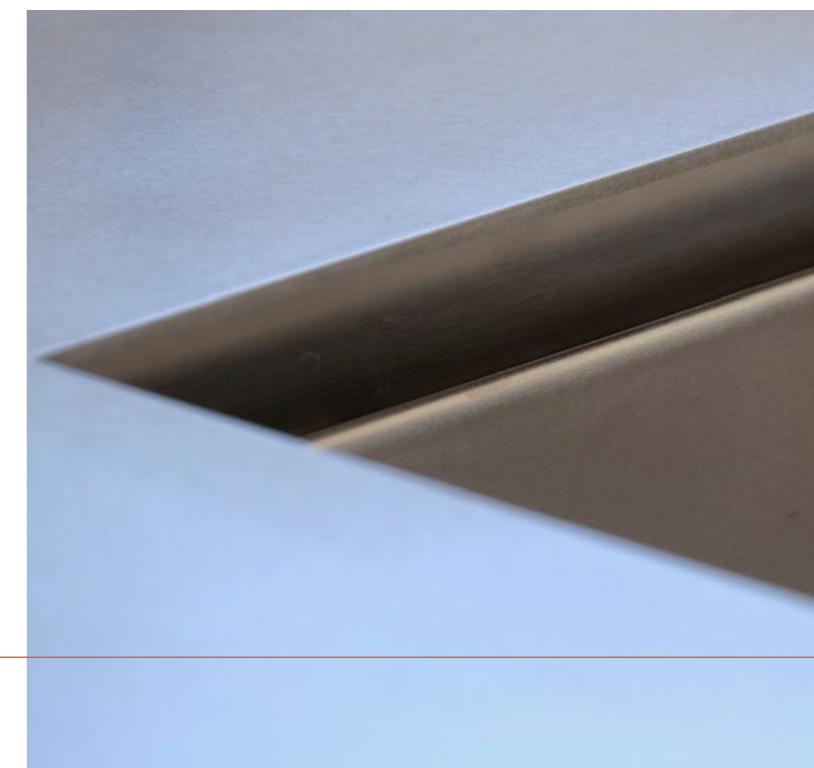
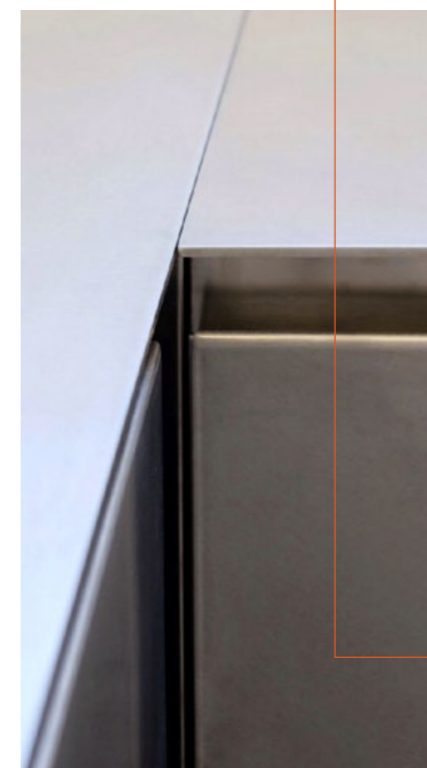
*Bases angle*

*Modelos listos para pedir*

*Modèles prêts à l'emploi*

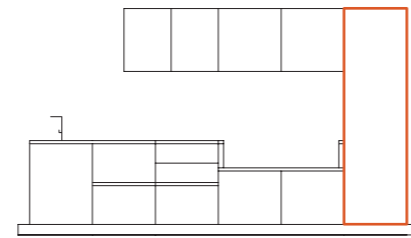
**IT** Ampie basi caratterizzate dalla presenza di un'unica anta e da agganci che rendono la cucina ad angolo, per l'appunto. Oltre agli angoli visibili, però, OF outdoorsitchens mette a disposizione dei suoi clienti anche l'angolo cieco, un tamponamento che può essere installato solo in presenza di un muro in cui fissare le due staffe da cui è costituito.

**EN** *Wide base units characterised by the presence of a single door and hooks that make the kitchen corner, in fact. In addition to the visible corners, however, OF outdoorsitchens also offers its customers the blind corner, a filler that can only be installed in the presence of a wall in which to fix the two brackets of which it is composed.*



**ES** Amplias bases caracterizadas por la presencia de una única puerta y enganches que hacen que la cocina sea precisamente de esquina. Sin embargo, además de los ángulos visibles, OF outdoorsitchens también pone a disposición de sus clientes el ángulo muerto, una regleta que sólo puede instalarse en presencia de una pared en la que fijar los dos soportes de la que está compuesta.

**FR** *De grandes bases caractérisées par la présence d'une seule porte et par des crochets qui rendent la cuisine un angle, précisément. En plus des angles visibles, cependant, OF outdoorsitchens met à disposition de ses clients également l'angle mort, un tamponnement qui ne peut être installé en présence d'un mur dans lequel fixer les deux supports dont il est constitué.*



## COLONNE

### Tall units

Modelli pronti all'ordine  
Models ready to order

## COLUMNAS

### Colonnes

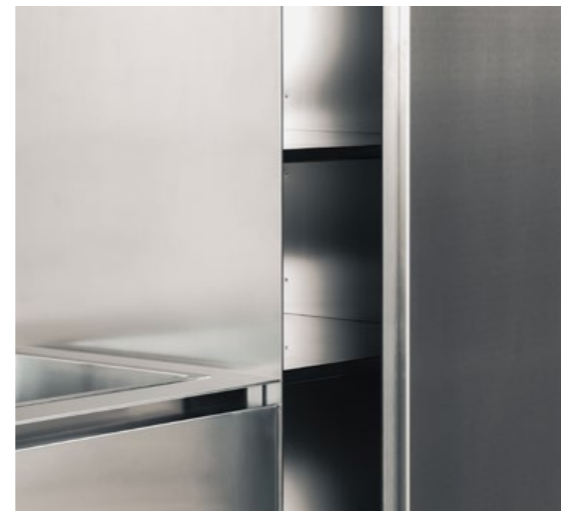
Modelos listos para pedir  
Modèles prêts à l'emploi

**IT** Colonne sigillate e profonde, in grado di contenere tutti gli elettrodomestici e di proteggerli dagli agenti atmosferici.

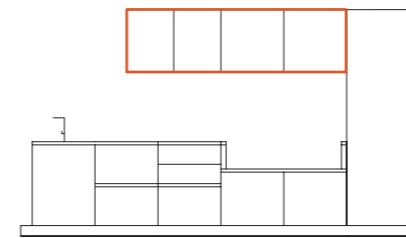
**EN** Sealed and deep tall units, able to hold all appliances and protect them from the weather.

**ES** Columnas selladas y profundas, capaces de contener todos los electrodomésticos y protegerlos de los agentes atmosféricos.

**FR** Des colonnes scellées et profondes, capables de contenir tous les appareils et de les protéger des intempéries.



OF outdoorkitchens



## PENSILI

### Wall units

Modelli pronti all'ordine  
Models ready to order

## COLGANTES

### Placards

Modelos listos para pedir  
Modèles prêts à l'emploi

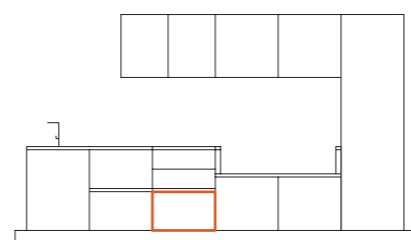
**IT** Pensili con anta singola o doppia.

**EN** Wall units with single or double door.

**ES** Colgantes con puerta simple o doble.

**FR** Placards avec vantail simple ou double.





## MODULI A GIORNO

*Open modules*

*Modelli pronti all'ordine*

*Models ready to order*

## MÓDULOS ABIERTOS

*Modules ouverts*

*Modelos listos para pedir*

*Modèles prêts à l'emploi*

**IT** Moduli idonei al contenimento degli elementi più disparati, quali impastatrici, macchine del ghiaccio, legna, e così via.

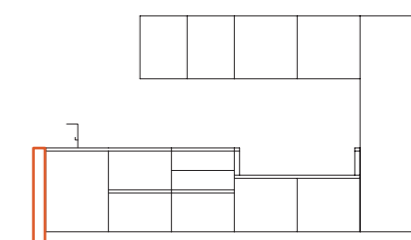
**EN** *Modules suitable for containing the most disparate elements, such as mixers, ice makers, wood, and so on.*

**ES** Módulos adecuados para contener los más diversos elementos, como amasadoras, máquinas de hielo, leña, y así sucesivamente.

**FR** *Des modules adaptés pour contenir des éléments les plus disparates, tels que pétrins, machines à glaçons, bois, etc.*



outside®



## FILLER

*Fillers*

*Modelli pronti all'ordine*

*Models ready to order*

## REGLETAS

*Filler*

*Modelos listos para pedir*

*Modèles prêts à l'emploi*



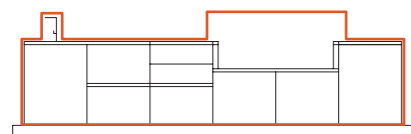
**IT** Tamponamenti per basi, colonne e pensili, da utilizzare per il riempimento di eventuali spazi vuoti. Il range di misure è predefinito: 20mm - 300mm.

**EN** *Fillers for base units, tall units and wall units, to be used for filling any empty spaces. The range of measures is predefined: 20mm - 300mm.*

**ES** Regletas para bases, columnas y colgantes, que se utilizan para rellenar cualquier hueco. El rango de medidas es predeterminado: 20mm - 300mm.

**FR** *Remplissages pour bases, colonnes et placards, à utiliser pour remplir des espaces vides. Le range des mesures est prédéfini: 20mm - 300mm.*





## COVER

### Cover

Modelli pronti all'ordine  
Models ready to order

## FUNDA

### Couverture

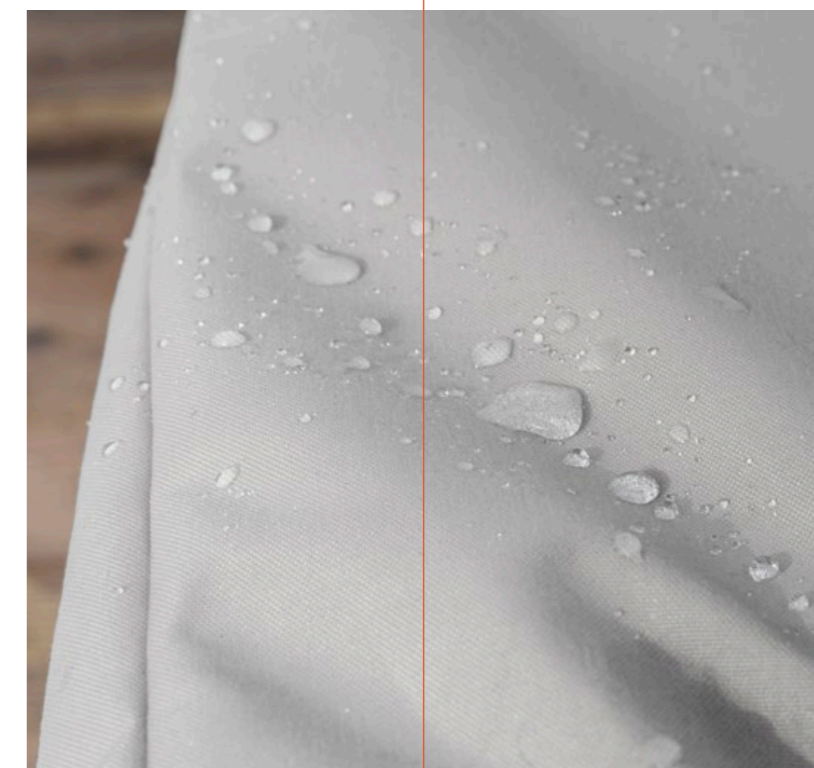
Modelos listos para pedir  
Modèles prêts à l'emploi

**IT** Su misura e impermeabili, disponibili in versione ad isola e a muro, le cover proteggono le cucine da esterno da ogni agente atmosferico, in tutte le stagioni.

**EN** Custom and waterproof, available in island and wall versions, the covers protect the outdoor kitchens from any atmospheric agent, in all seasons.

**ES** A medida e impermeables, disponibles en versión de isla y pared, las fundas protegen las cocinas de exterior de cualquier agente atmosférico, en todas las estaciones.

**FR** Sur mesure et imperméables, disponibles en version îlot et murale, les couvertures protègent les cuisines d'extérieurs de tous les agents atmosphériques, en toutes saisons.

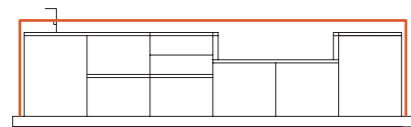


**IT** Versione a parete. Cover fissata, con strisce in velcro, su barre in acciaio avvitate al muro.

**EN** Wall version. Cover fixed, with velcro strips, on steel bars screwed to the wall.

**ES** Versión de pared. Funda fijada, con tiras de velcro, en barras de acero atornilladas a la pared.

**FR** Version murale. Couverture fixé, avec des bandes velcro, sur des barres d'acier vissées au mur.



## SNACK BAR

### Snack bar

Modelli pronti all'ordine  
Models ready to order

## SNACK BAR

### Snack bar

Modelos listos para pedir  
Modèles prêts à l'emploi

**IT** Bancone disponibile in tre varianti, con una lunghezza compresa tra 1200mm e 3200mm. Ogni variante può essere realizzata in tre finiture: acciaio inox naturale, acciaio inox delabrè, acciaio inox satinato a mano.

**EN** Counter available in three variants, with a length between 1200mm e 3200mm. Each variant can be made in three finishes: natural stainless steel, delabrè stainless steel, hand brushed stainless steel.

**ES** Barra disponible en tres variantes, con una longitud de entre 1200mm y 3200mm. Cada variante se puede realizar en tres acabados: acero inoxidable natural, acero inoxidable delabrè, acero inoxidable satinado a mano.

**FR** Comptoir disponible en trois variantes, d'une longueur comprise entre 1200mm et 3200mm. Chaque variante peut être réalisée en trois finitions: acier inox naturel, acier inox delabrè, acier inox satiné à la main.



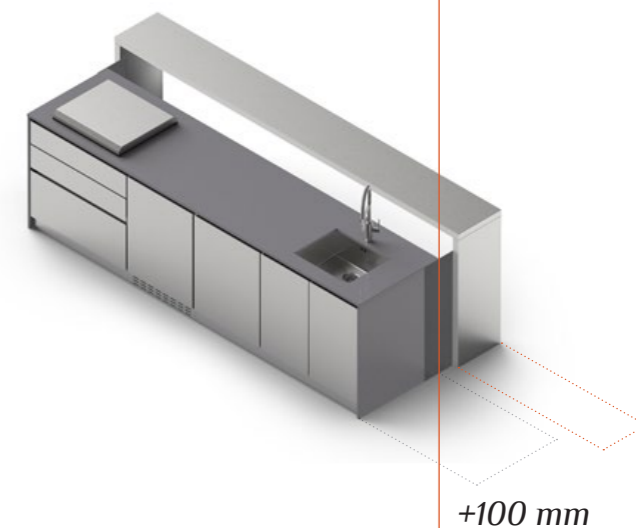
outside

**IT** Snack bar, **variante 1 (+100mm)**. Arretrato rispetto alla parte posteriore della cucina, lo snack bar presenta due distanziali laterali che ne permettono il montaggio.

**EN** Snack bar, **variant 1 (+100mm)**. Set back from the rear of the kitchen, the snack bar has two side spacers that allow the installation.

**ES** Snack bar, **variante 1 (+100mm)**. Situado detrás de la parte trasera de la cocina, el snack bar dispone de dos separadores laterales que permiten su montaje.

**FR** Snack bar, **variante 1 (+100mm)**. En retrait par rapport à l'arrière de la cuisine, le snack bar est doté de deux entretoises latérales qui en permettent le montage.



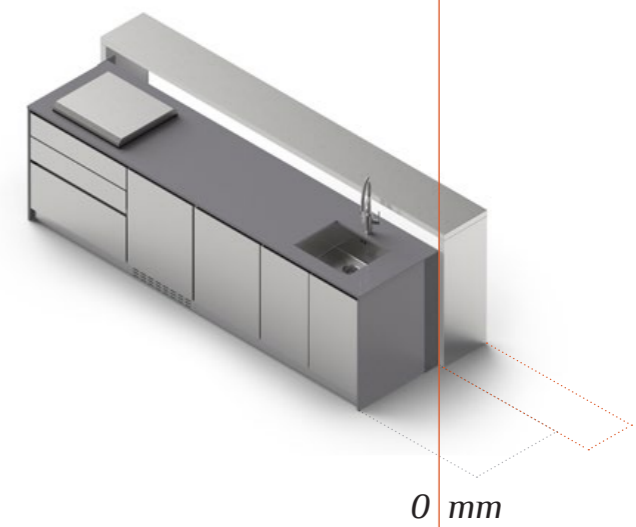
+100 mm

**IT** Snack bar, **variante 2 (0mm)**. In linea con il retro della cucina, lo snack bar presenta due distanziali laterali che ne permettono il montaggio.

**EN** Snack bar, **variant 2 (0mm)**. In line with the rear of the kitchen, the snack bar has two side spacers that allow the installation.

**ES** Snack bar, **variante 2 (0mm)**. En línea con la parte trasera de la cocina, el snack bar dispone de dos separadores laterales que permiten su montaje.

**FR** Snack bar, **variante 2 (0mm)**. En ligne avec l'arrière de la cuisine, le snack bar est doté de deux entretoises latérales qui en permettent le montage.



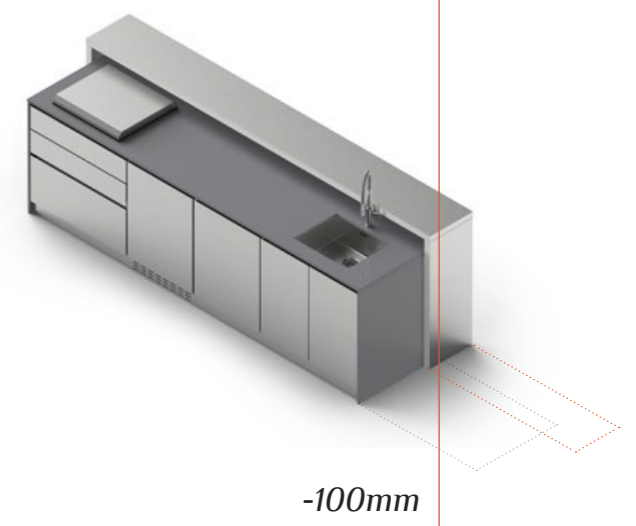
0 mm

**IT** Snack bar, **variante 3 (-100mm)**. Con i fianconi montati direttamente sui carter laterali della cucina, questa opzione non è attuabile in presenza di barbecue, in quanto non ne consentirebbe l'apertura.

**EN** Snack bar, **variant 3 (-100mm)**. With the sides installed directly on the side panels of the kitchen, this option is not feasible in the presence of barbecues, as it would not allow their opening.

**ES** Snack bar, **variante 3 (-100mm)**. Con los paneles montados directamente en los paneles laterales de la cocina, esta opción no es viable en presencia de barbacoas, ya que no permitiría su apertura.

**FR** Snack bar, **variante 3 (-100mm)**. Avec les panneaux montés directement sur les panneaux latéraux de la cuisine, cette option n'est pas réalisable en présence de barbecues, car cela ne permettrait pas de les ouvrir.

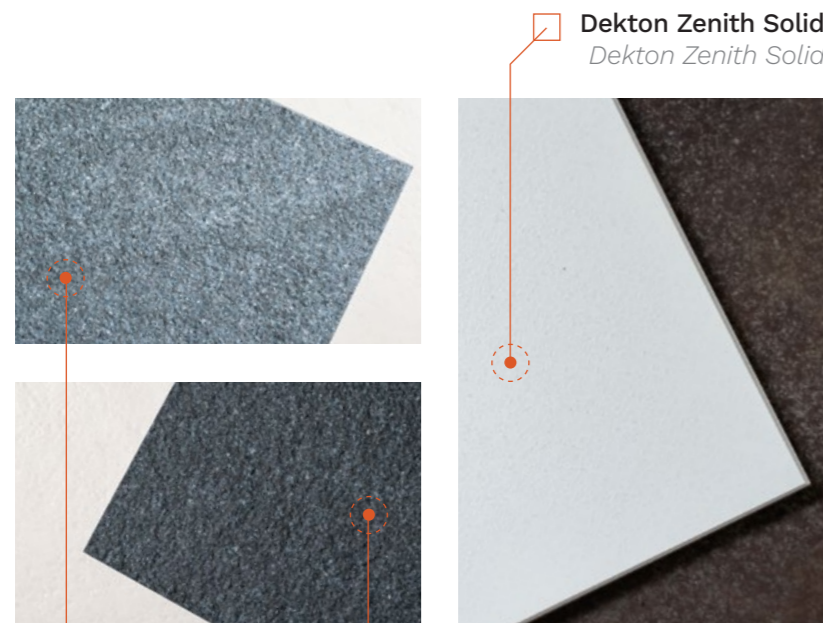


-100mm



**Acciaio inox naturale**  
Natural stainless steel  
**Acero inoxidable natural**  
Acier inox naturel

**Acciaio corten**  
Corten steel  
**Acero corten**  
Acier corten



**Laminam Cardoso Grigio Fiammato**  
Laminam Cardoso Grigio Fiammato

**Laminam Cardoso Nero fiammato**  
Laminam Cardoso Nero Fiammato

**Dekton Edora Natural**  
Dekton Edora Natural

**Dekton Zenith Solid**  
Dekton Zenith Solid

## MATERIALI, FINITURE, COLORI

Materials, finishes, colours

Modelli pronti all'ordine  
Models ready to order

## MATERIALES, ACABADOS, COLORES

Materiaux, finitions, couleurs

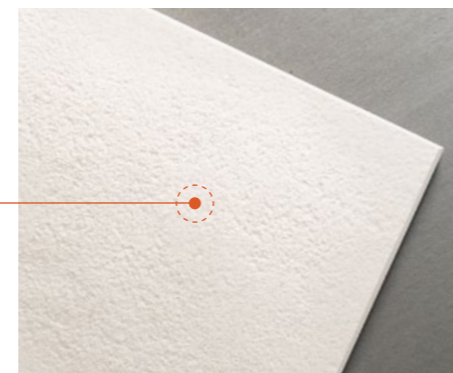
Modelos listos para pedir  
Modèles prêts à l'emploi

**IT** Non solo acciaio inox naturale, ma una pluralità di materiali, finiture e colori. Ogni cliente ha la possibilità di personalizzare la propria cucina da esterno in base al proprio stile di vita.

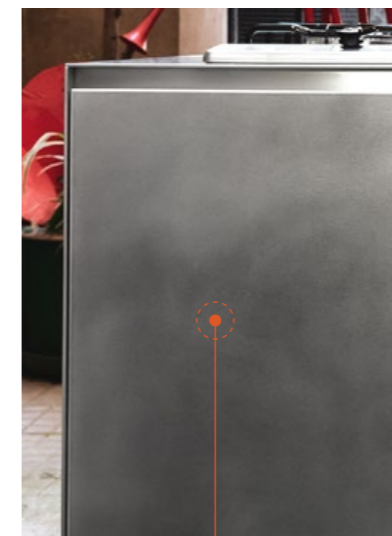
**EN** Not only natural stainless steel, but a plurality of materials, finishes and colours. Each customer has the opportunity to customise their outdoor kitchen according to their lifestyle.

**ES** No sólo el acero inoxidable natural, sino una pluralidad de materiales, acabados y colores. Cada cliente tiene la posibilidad de personalizar su cocina de exterior según su estilo de vida.

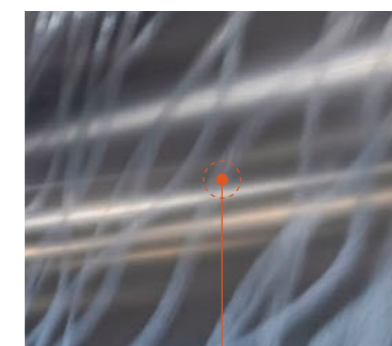
**FR** Non seulement l'acier inox naturel, mais une pluralité de matériaux, de finitions et de couleurs. Chaque client a la possibilité de personnaliser sa cuisine d'extérieur en fonction de son style de vie.



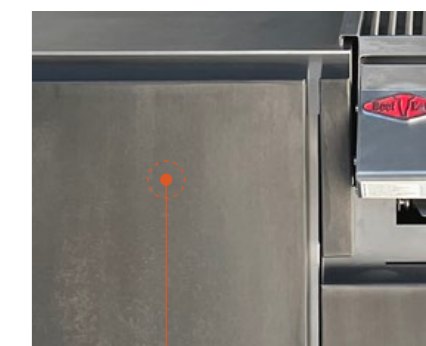
**Acciaio Inox Laccato Opaco Goffrato**  
Embossed matt lacquered stainless steel  
**Acero inoxidable lacado mate gofrado**  
Acier inox laqué mate gaufré



**Acciaio inox Delabré**  
Delabré stainless steel  
**Acero inoxidable Delabré**  
Acier inox Délabré

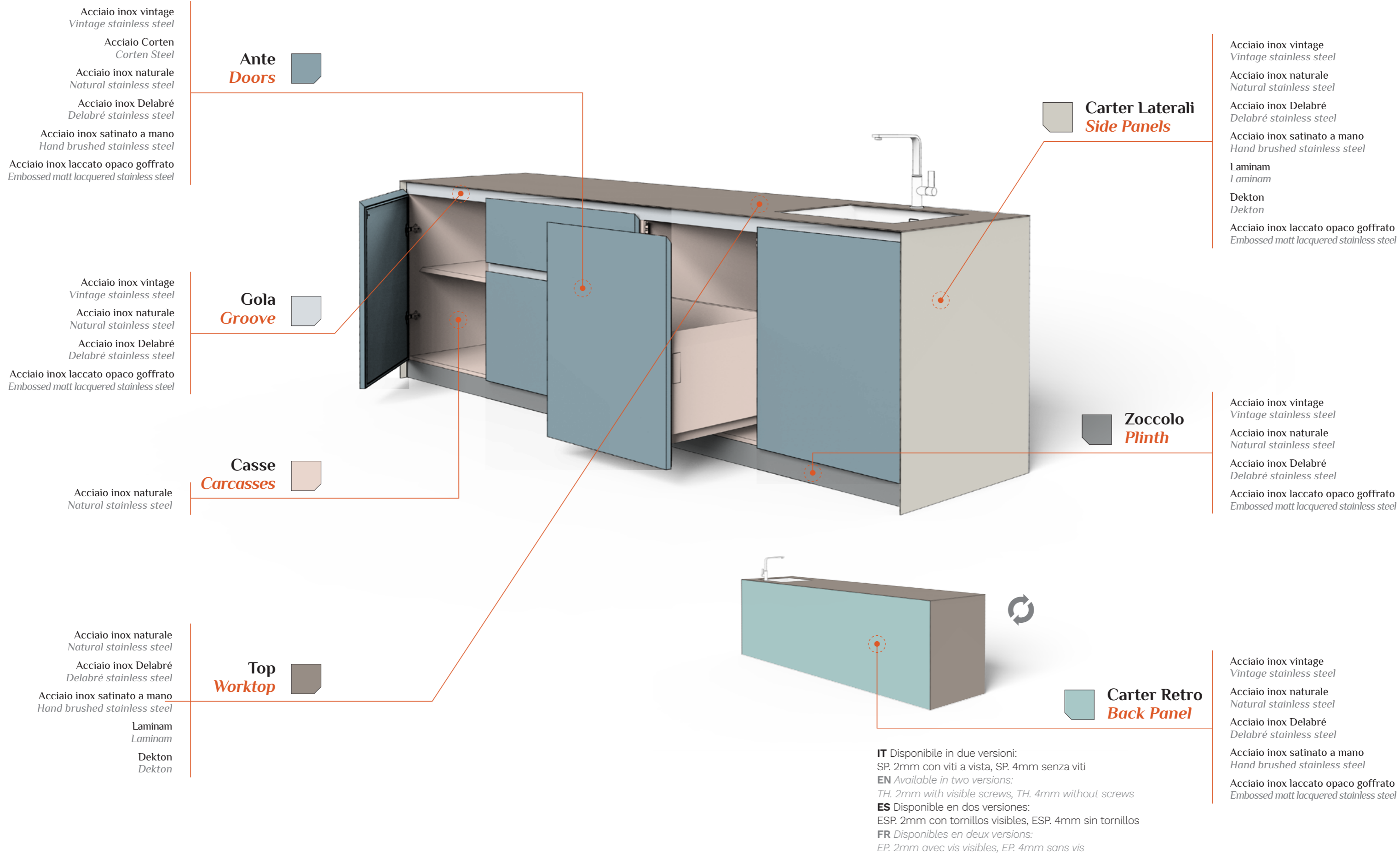


**Acciaio inox satinato a mano**  
Hand brushed stainless steel  
**Acero inoxidable satinado a mano**  
Acier inox satiné à la main



**Acciaio inox vintage**  
Vintage stainless steel  
**Acero inoxidable vintage**  
Acier inox vintage

Materiali <i>Materials</i>	Ante <i>Doors</i>	Gola <i>Groove</i>	Casse <i>Carcasses</i>	Top <i>Worktop</i>	Zoccolo <i>Plinth</i>	Carter Laterali <i>Side Panels</i>	Carter Retro <i>Back Panel</i>
Acciaio inox vintage <i>Vintage stainless steel</i>	■	■			■	■	■
Acciaio Corten <i>Corten Steel</i>	■						
Acciaio inox naturale <i>Natural stainless steel</i>	■	■	■	■	■	■	■
Acciaio inox Delabré <i>Delabré stainless steel</i>	■	■		■	■	■	■
Acciaio inox satinato a mano <i>Hand brushed stainless steel</i>	■			■		■	■
Laminam Cardoso Nero Fiammato <i>Laminam Cardoso Nero Fiammato</i>				■		■	
Laminam Cardoso Grigio Fiammato <i>Laminam Cardoso Grigio Fiammato</i>				■		■	
Dekton Edora Natural <i>Dekton Edora Natural</i>				■		■	
Dekton Zenith Solid <i>Dekton Zenith Solid</i>				■		■	
Acciaio inox laccato opaco gofrato <i>Embossed matt lacquered stainless steel</i>	■	■			■	■	■





outdoorkitchens

## VIA NOLFI

### Via Nolfi

Modelli pronti all'ordine  
Models ready to order  
Modelos listos para pedir  
Modèles prêts à l'emploi



**IT** Centro estetico e progettuale di OF outdoorkitchens è il modello Via Nolfi, fondato su un know-how totalmente rivoluzionario. Proposto in diverse misure di lunghezza, disponibili nelle due versioni a parete e ad isola, Via Nolfi si contraddistingue per la capacità contenitiva e per la possibilità di diversificare accessori ed elettrodomestici. Oltre alle cinque composizioni da noi predefinite, infatti, sono innumerevoli le potenziali personalizzazioni.

**EN** *The aesthetic and design centre of OF outdoorkitchens is the Via Nolfi model, based on a totally revolutionary know-how. Proposed in different lengths, available in the two versions wall and island, Via Nolfi is characterized by its storage capacity and the possibility to diversify accessories and appliances. Indeed, in addition to the five predefined compositions we offer, there are countless potential customisations.*

**ES** El centro de la estética y del diseño de OF outdoorkitchens es el modelo Via Nolfi, basado en un know how totalmente revolucionario. Propuesto en diferentes longitudes, disponibles en las dos versiones de pared e isla, Via Nolfi destaca por la capacidad de almacenamiento y la posibilidad de diversificar accesorios y electrodomésticos. De hecho, además de las cinco composiciones predefinidas que ofrecemos, existen innumerables posibilidades de personalización.

**FR** *Centre esthétique et de design de OF outdoorkitchens est le modèle Via Nolfi, fondé sur un savoir-faire totalement révolutionnaire. Proposé en différentes mesures de longueur, disponibles dans les deux versions en appui et en îlot, Via Nolfi se caractérise par la capacité de contention et par la possibilité de diversifier accessoires et électroménagers. En plus des cinq compositions prédéfinies par nous, les personnalisations potentielles sont innombrables.*

#### VIA NOLFI 527



**IT** L 210,8 cm. Finitura in acciaio inox delabrè 304. Completa di fornello a gas, barbecue 4 fuochi, lavello sopratop, rubinetto. Disponibile anche nella versione ad isola e con lavello a sinistra.

**EN** L 210,8 cm. 304 delabrè stainless steel finish. Composed of gas hob, four-burner barbecue, in-set sink, and tap. Also available in island version and with sink on the left.

**ES** L 210,8 cm. Acabado en acero inoxidable delabrè 304. Compuesta por placa de gas, barbacoa de cuatro quemadores, fregadero sobre encimera, grifo. Disponible también en la versión en isla y con fregadero a la izquierda.

**FR** L 210,8 cm. Finition en acier inox delabrè 304. Complète avec cuisinière à gaz, barbecue 4 feux, évier sur plan, robinet. Disponible également dans la version îlot et avec évier à gauche.

#### VIA NOLFI 528



**IT** L 332,8 cm. Finitura in acciaio inox delabrè 304. Completa di friggitrice, barbecue 4 fuochi, fornello a gas, frigo, lavello sopratop, rubinetto. Disponibile anche nella versione ad isola e con lavello a sinistra.

**EN** L 332,8 cm. 304 delabrè stainless steel finish. Composed of fryer, four-burner barbecue, gas hob, fridge, in-set sink, and tap. Also available in island version and with sink on the left.

**ES** L 332,8 cm. Acabado en acero inoxidable delabrè 304. Compuesta por freidora, barbacoa de cuatro quemadores, placa de gas, nevera, fregadero sobre encimera, grifo. Disponible también en la versión en isla y con fregadero a la izquierda.

**FR** L 332,8 cm. Finition en acier inox delabrè 304. Complète de friteuse, barbecue 4 feux, cuisinière à gaz, frigo, évier sur plan, robinet. Disponible également dans la version îlot et avec évier à gauche.

#### VIA NOLFI 529



**IT** L 270,8 cm. Finitura in acciaio inox delabrè 304. Completa di cassetto interno, barbecue 4 fuochi, lavello sopratop, rubinetto. Disponibile anche nella versione ad isola e con lavello a sinistra.

**EN** L 270,8 cm. 304 delabrè stainless steel finish. Composed of internal drawer, four-burner barbecue, in-set sink, and tap. Also available in island version and with sink on the left.

**ES** L 270,8 cm. Acabado en acero inoxidable delabrè 304. Compuesta por cajón interior, barbacoa de cuatro quemadores, fregadero sobre encimera, grifo. Disponible también en la versión en isla y con fregadero a la izquierda.

**FR** L 270,8 cm. Finition en acier inox delabrè 304. Complète de tiroir interne, barbecue 4 feux, évier sur plan, robinet. Disponible également dans la version îlot et avec évier à gauche.

#### VIA NOLFI 530



**IT** L 270,8 cm. Finitura in acciaio inox delabrè 304. Completa di fornello a gas, barbecue 4 fuochi, lavello sopratop, rubinetto. Disponibile anche nella versione ad isola e con lavello a sinistra.

**EN** L 270,8 cm. 304 delabrè stainless steel finish. Composed of gas hob, four-burner barbecue, in-set sink, and tap. Also available in island version and with sink on the left.

**ES** L 270,8 cm. Acabado en acero inoxidable delabrè 304. Compuesta por placa de gas, barbacoa de cuatro quemadores, fregadero sobre encimera, grifo. Disponible también en la versión en isla y con fregadero a la izquierda.

**FR** L 270,8 cm. Finition en acier inox delabrè 304. Complète de cuisinière à gaz, barbecue 4 feux, évier sur plan, robinet. Disponible également dans la version îlot et avec évier à gauche.

#### VIA NOLFI 531



**IT** L 272,8 cm. Finitura in acciaio inox delabrè 304. Completa di fornello a gas, barbecue 4 fuochi, frigorifero, lavello sopratop, rubinetto. Disponibile anche nella versione ad isola e con lavello a sinistra.

**EN** L 272,8 cm. 304 delabrè stainless steel finish. Composed of gas hob, four-burner barbecue, fridge, in-set sink, and tap. Also available in island version and with sink on the left.

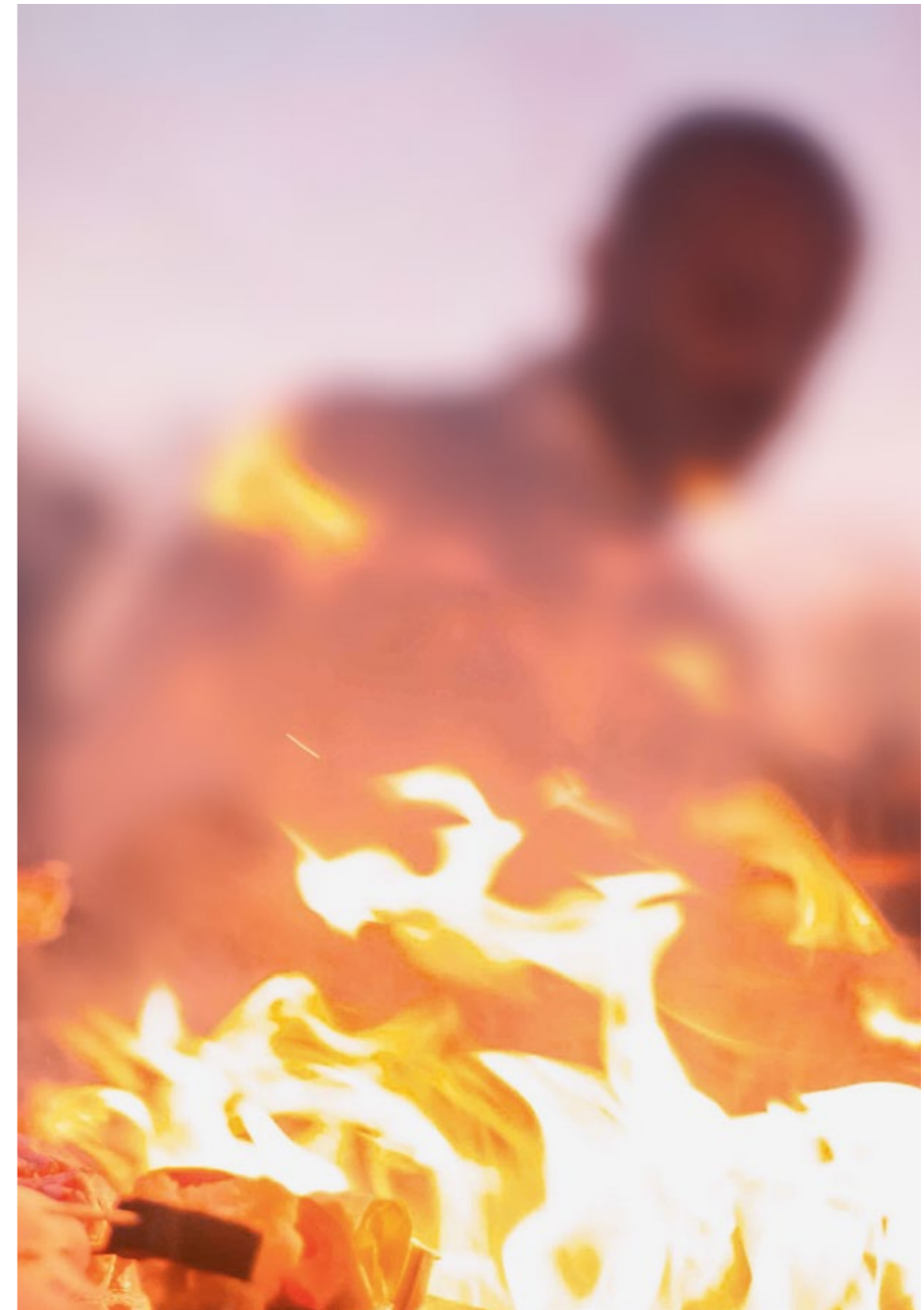
**ES** L 272,8 cm. Acabado en acero inoxidable delabrè 304. Compuesta por placa de gas, barbacoa de cuatro quemadores, nevera, fregadero sobre encimera, grifo. Disponible también en la versión en isla y con fregadero a la izquierda.

**FR** L 272,8 cm. Finition en acier inox delabrè 304. Complète de cuisinière à gaz, barbecue 4 feux, frigo, évier sur plan, robinet. Disponible également dans la version îlot et avec évier à gauche.



the  
**outsider**





## GALLERIA

### Gallery

Ispirazione per i nostri clienti  
Inspiration for our customers

## GALERÍA

### Galerie

Inspiración para nuestros clientes  
Inspiration pour nos clients



**IT** L'ampia modulistica rende gli ambienti in cui collocare le cucine da esterno realmente infiniti. Offriamo composizioni predefinite, ma anche modulabili in base alle necessità di ogni cliente.

**EN** The wide range of modules makes the environments in which to place outdoor kitchens really countless. We offer not only predefined compositions but also compositions that can be adapted to the needs of each customer.

**ES** La amplia gama de módulos hace que los ambientes en los que colocar las cocinas de exterior sean realmente infinitos. Ofrecemos no sólo composiciones predefinidas, sino también modulables según las necesidades de cada cliente.

**FR** La large possibilité de modules rend les environnements dans lesquels placer les cuisines d'extérieur vraiment infinies. Nous offrons des compositions prédéfinies, mais aussi modulables en fonction des besoins de chaque client.



**Acciaio Inox Naturale**  
Natural stainless steel  
Acero inoxidable natural  
Acier inox naturel

54



**Acciaio Inox Delabré**  
Delabré stainless steel  
Acero inoxidable delabré  
Acier inox délabré

56



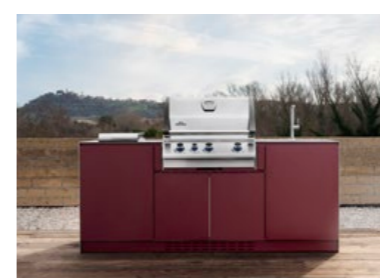
**Acciaio Inox Vintage**  
Vintage stainless steel  
Acero inoxidable vintage  
Acier inox vintage

58



**Acciaio Inox Laccato Opaco Goffrato RAL 7030**  
Embossed matt lacquered stainless steel RAL 7030  
Acero inoxidable lacado mate gofrado RAL 7030  
Acier inox laqué mate gaufré RAL 7030

60



**Acciaio Inox Laccato Opaco Goffrato RAL 3005**  
Embossed matt lacquered stainless steel RAL 3005  
Acero inoxidable lacado mate gofrado RAL 3005  
Acier inox laqué mate gaufré RAL 3005

62

## Acciaio Inox Naturale

Natural stainless steel  
Acero inoxidable natural  
Acier inox naturel

### Elementi Elements Elementos Eléments

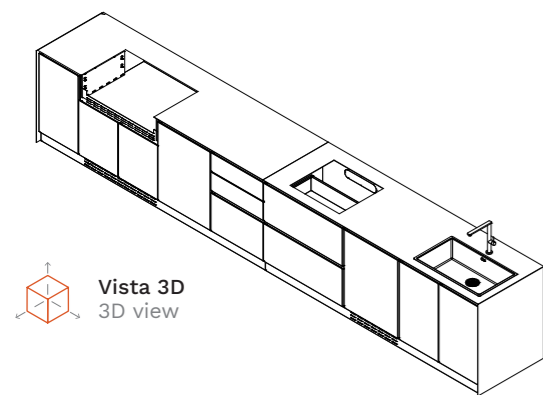
Cassetti interni, barbecue Beefeater, 1 cestone e 2 cassetti, 2 cestoni, piano a induzione, frigo, lavello sopratop, rubinetto *Internal drawers, Beefeater barbecue, 1 basket and 2 drawers, 2 baskets, induction hob, fridge, in-set sink, tap*  
Cajones interiores, barbacoa Beefeater, 1 cesto y 2 cajones, 2 cestos, placa de inducción, nevera, fregadero, grifo *Tiroirs intérieurs, barbecue Beefeater, 1 grand tiroir et 2 tiroirs, 2 grands tiroirs, plan à induction, frigo, évier, robinet*

### Descrizione Description Descripción Description

Cucina da esterno in acciaio inox naturale  
*Natural stainless steel outdoor kitchen*  
Cocina de exterior de acero inoxidable natural  
*Cuisine pour extérieur en acier inox naturel*

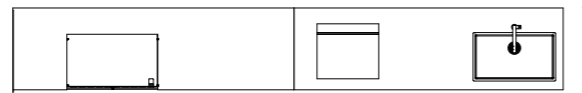
### Caratteristiche tecniche Technical characteristics

<b>Modello</b> Model	OF Via Nolfi da esterno OF Via Nolfi outdoor
<b>Finitura cassa</b> Carcass finish	Acciaio inox naturale 304 304 natural stainless steel
<b>Finitura frontale</b> Door finish	Acciaio inox naturale 304 (Smart) 304 Natural stainless steel (Smart)
<b>Top</b> Worktop	Spessore 4mm Acciaio inox naturale 304 4mm thick 304 natural stainless steel
<b>Gola sottotop</b> Insert groove	Orizzontale Acciaio inox naturale 304 Horizontal 304 natural stainless steel
<b>Zoccolo</b> Plinth	H100 Acciaio inox naturale 304 H100 304 natural stainless steel
<b>Lavello</b> Sink	OF / Installazione sopratop OF / In-set installation
<b>Rubinetto</b> Tap	OF / Square OF / Square
<b>Pc Induzione</b> Induction hob	OF / Bosch bianco OF / Bosch bianco



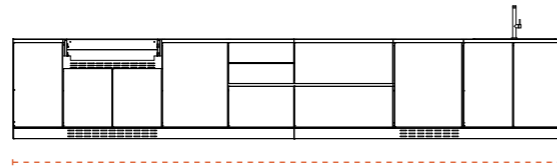
Vista 3D  
3D view

Vista dall'alto Top view Vista superior Vue du haut



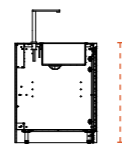
Profondità Depth Profundidad Profondeur 765 mm

Vista frontale Front view Vista frontal Vue frontale



Larghezza Width Anchura Largeur 5000 mm

Vista laterale Side view Vista lateral Vue latérale



Altezza Height Altura Hauteur 904 mm



## Acciaio Inox Delabré

*Delabré stainless steel*  
*Acero inoxidable delabré*  
*Acier inox délabré*

### Elementi Elements Elementos Eléments

Fornello a gas da incasso tripla corona con coperchio inox, Plancha Planet, lavello sopratop, rubinetto *Triple crown gas hob with steel cover, Plancha Planet, in-set sink, tap*  
Placa de gas empotrada triple corona con tapa de acero inoxidable, Plancha Planet, fregadero sobre encimera, grifo *Cuisinière à gaz encastrée triple couronne avec couvercle inox, Plancha Planet, évier sur plan, robinet*

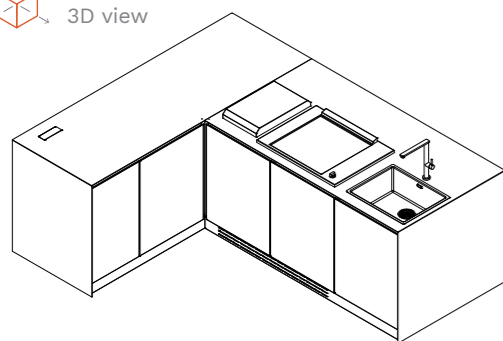
### Descrizione Description Descripción Description

Cucina da esterno in acciaio inox delabré  
*Delabré stainless steel outdoor kitchen*  
Cocina de exterior de acero inoxidable delabré  
*Cuisine pour l'extérieur en acier inox délabré*

### Caratteristiche tecniche Technical characteristics

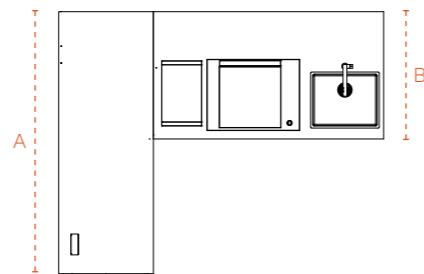
<b>Modello</b> Model	OF Via Nolfi da esterno OF Via Nolfi outdoor
<b>Finitura cassa</b> Carcass finish	Acciaio inox naturale 304 304 natural stainless steel
<b>Finitura frontale</b> Door finish	Acciaio inox delabré 304 (Smart) 304 delabré stainless steel (Smart)
<b>Top</b> Worktop	Spessore 4mm Acciaio inox delabré 304 4mm thick 304 delabré stainless steel
<b>Gola sottotop</b> Insert groove	Orizzontale Acciaio inox naturale 304 Horizontal 304 natural stainless steel
<b>Zoccolo</b> Plinth	H100 Acciaio inox naturale 304 H100 304 natural stainless steel
<b>Lavello</b> Sink	OF / Installazione sopratop OF / In-set installation
<b>Rubinetto</b> Tap	OF / Square OF / Square
<b>Bbq</b> Bbq	Plancha Planet Plancha Planet
<b>Fornello a gas</b> Gas hob	Da incasso tripla corona Built-in triple crown

Vista 3D  
3D view



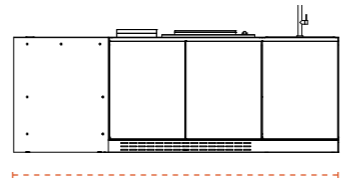
outside®

Vista dall'alto Top view Vista superior Vue du haut



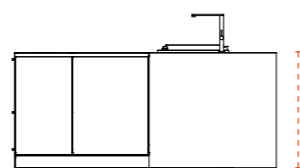
Profondità Depth Profundidad Profondeur A-2058 / B-1000 mm

Vista frontale Front view Vista frontal Vue frontale



Larghezza Width Anchura Largeur 2553 mm

Vista laterale Side view Vista lateral Vue latérale



Altezza Height Altura Hauteur 904 mm



## Acciaio Inox Vintage

Vintage stainless steel  
Acero inoxidable vintage  
Acier inox vintage

### Elementi Elements Elementos Eléments

Big Green Egg, cestone, cassetto interno, barbecue  
Dolcevita, frigo, lavello sopratop, rubinetto  
Big Green Egg, basket, internal drawer, Dolcevita  
barbecue, fridge, in-set sink, tap  
Big Green Egg, cesto, cajón interior, barbaoca  
Dolcevita, nevera, fregadero sobre encimera, grifo  
Big Green Egg, grand tiroir, tiroir intérieur, barbecue  
Dolcevita, réfrigérateur, évier sur plan, robinet

### Descrizione Description Descripción Description

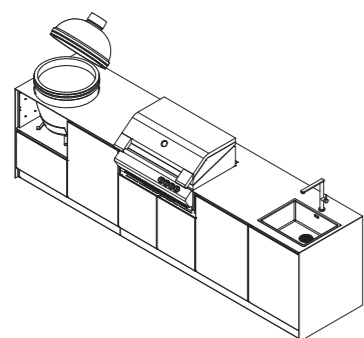
Cucina da esterno in acciaio inox vintage  
Vintage stainless steel outdoor kitchen  
Cocina de exterior de acero inoxidable vintage  
Cuisine pour extérieur en acier inox vintage

### Caratteristiche tecniche

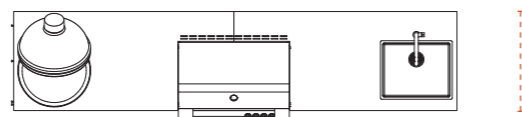
#### Technical characteristics

<b>Modello</b> Model	OF Via Nolfi da esterno OF Via Nolfi outdoor
<b>Finitura cassa</b> Carcass finish	Acciaio inox naturale 304 304 natural stainless steel
<b>Finitura frontale</b> Door finish	Acciaio inox vintage 304 (Smart) 304 vintage stainless steel (Smart)
<b>Top</b> Worktop	Spessore 4mm Acciaio inox delabré 304 4mm thick 304 delabré stainless steel
<b>Gola sottotop</b> Undermount groove	Orizzontale Acciaio inox naturale 304 Horizontal 304 natural stainless steel
<b>Zoccolo</b> Plinth	H100 Acciaio inox naturale 304 H100 304 natural stainless steel
<b>Carter laterali</b> Side panels	Spessore 4mm Acciaio inox vintage 304 4mm thick 304 vintage stainless steel
<b>Carter retro</b> Back panel	Spessore 4mm Acciaio inox delabré 304 4mm thick 304 delabré stainless steel
<b>Lavello</b> Sink	OF / Installazione sopratop OF / In-set installation
<b>Rubinetto</b> Tap	OF / Square OF / Square
<b>Bbq</b> BBq	OF / Bbq Dolcevita OF / Doclevita bbq

 Vista 3D  
3D view

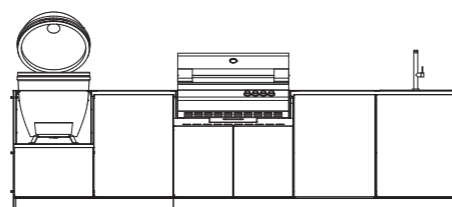


Vista dall'alto Top view Vista superior Vue du haut



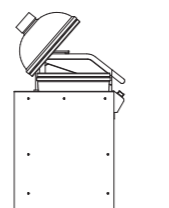
 **Profondità** Depth Profundidad Profondeur 744 mm

Vista frontale Front view Vista frontal Vue frontale



 **Larghezza** Width Anchura Largeur 3330 mm

Vista laterale Side view Vista lateral Vue latérale



 **Altezza** Height Altura Hauteur 904 mm



# Acciaio Inox Laccato Opaco Goffrato RAL 7030

Embossed matt lacquered stainless steel RAL 7030  
Acero inoxidable lacado mate gofrado RAL 7030  
Acier inox laqué mate gaufré RAL 7030

## Elementi Elements Elementos Eléments

Lavello sopratop, rubinetto, barbecue Dolcevit  
In-set sink, tap, Dolcevit barbecue  
Fregadero sobre encimera, grifo, barbacoa Dolcevit  
Évier sur plan, robinet, barbecue Dolcevit

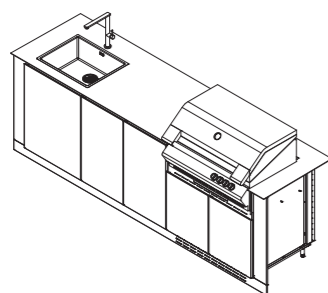
**Descrizione Description Descripción Description**  
Cucina da esterno laccata opaca gofrata in RAL 7030  
Embossed matt lacquered outdoor kitchen in RAL 7030  
Cocina de exterior lacada mate gofrada en RAL 7030  
Cuisine pour extérieur laquée mate gaufrée en RAL 7030

## Caratteristiche tecniche Technical characteristics

<b>Modello</b> Model	OF Via Nolfi da esterno OF Via Nolfi outdoor
<b>Finitura cassa</b> Carcass finish	Acciaio inox naturale 304 304 natural stainless steel
<b>Finitura frontale</b> Door finish	Acciaio inox laccato opaco gofrato 304 (Smart) 304 embossed matt lacquered stainless steel (Smart)
<b>Top</b> Worktop	Spessore 4mm Acciaio inox naturale 304 4mm thick 304 natural stainless steel
<b>Gola sottotop</b> Insert groove	Orizzontale Acciaio inox naturale 304 Horizontal 304 natural stainless steel
<b>Zoccolo</b> Plinth	H100 Acciaio inox naturale 304 H100 304 natural stainless steel
<b>Carter</b> Panels	Spessore 4mm Acciaio inox naturale 304 4mm thick 304 natural stainless steel
<b>Lavello</b> Sink	OF / Installazione sopratop OF / In-set installation
<b>Rubinetto</b> Tap	OF / Square OF / Square
<b>Bbq</b> BBq	OF / Bbq Dolcevit OF / Dolcevit bbq



Vista 3D  
3D view



Vista dall'alto Top view Vista superior Vue du haut



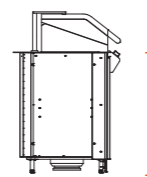
Profondità Depth Profundidad Profondeur 744 mm

Vista frontale Front view Vista frontal Vue frontale

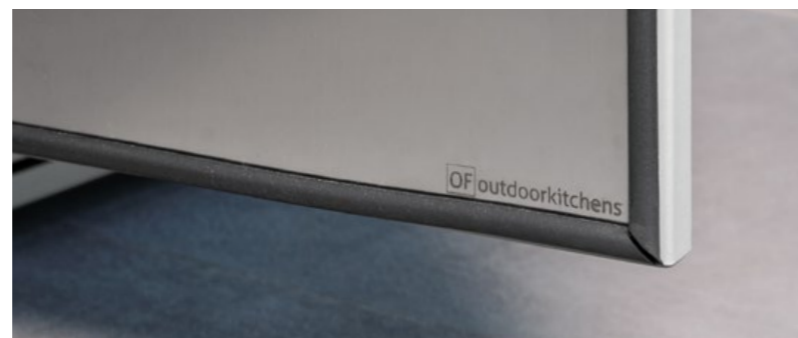


Larghezza Width Anchura Largeur 2680 mm

Vista laterale Side view Vista lateral Vue latérale



Altezza Height Altura Hauteur 904 mm



# Acciaio Inox Laccato Opaco Goffrato RAL 3005

Embossed matt lacquered stainless steel RAL 3005  
Acero inoxidable lacado mate gofrado RAL 3005  
Acier inox laqué mate gaufré RAL 3005

## Elementi Elements Elementos Eléments

Piano cottura a gas, barbecue Napoleon, lavello sopratop, rubinetto  
Gas hob, Napoleon barbecue, in-set sink, tap  
Placa de gas, barbacoa Napoleon, fregadero sobre encimera, grifo  
Cuisinière a gaz, barbecue Napoleon, évier sur plan, robinet

## Descrizione Description Descripción Description

Cucina da esterno laccata opaca gofrata in RAL 3005  
Embossed matt lacquered outdoor kitchen in RAL 3005  
Cocina de exterior lacada mate gofrada en RAL 3005  
Cuisine pour extérieur laquée mate gaufrée en RAL 3005

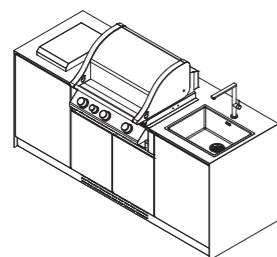
## Caratteristiche tecniche

### Technical characteristics

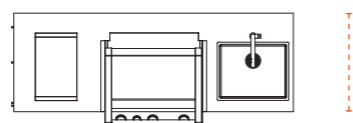
<b>Modello</b> Model	OF Via Nolfi da esterno OF Via Nolfi outdoor
<b>Finitura cassa</b> Carcass finish	Acciaio inox naturale 304 304 natural stainless steel
<b>Finitura frontale</b> Door finish	Acciaio inox laccato opaco gofrato (Smart) Embossed matt lacquered stainless steel (Smart)
<b>Top</b> Worktop	Spessore 4mm Acciaio inox delabrè 304 4mm thick 304 delabrè stainless steel
<b>Gola sottotop</b> Insert groove	Orizzontale Acciaio inox laccato opaco gofrato 304 Horizontal 304 embossed matt lacquered stainless steel
<b>Zoccolo</b> Plinth	H100 Acciaio inox laccato opaco gofrato 304 H100 304 embossed matt lacquered stainless steel
<b>Carter</b> Panels	Spessore 4mm Acciaio inox delabrè 304 4mm thick 304 delabrè stainless steel
<b>Lavello</b> Sink	OF / Installazione sopratop OF / In-set installation
<b>Rubinetto</b> Tap	OF / Square OF / Square
<b>Bbq</b> BBq	OF / Bbq Napoleon OF / Napoleon bbq
<b>Fornello a gas</b> Gas hob	Da incasso tripla corona Built-in triple crown



Vista 3D  
3D view

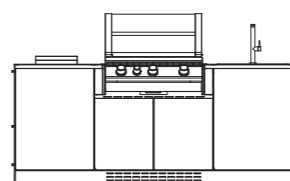


Vista dall'alto Top view Vista superior Vue du haut



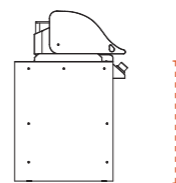
Profondità Depth Profundidad Profondeur 744 mm

Vista frontale Front view Vista frontal Vue frontale



Larghezza Width Anchura Largeur 2110 mm

Vista laterale Side view Vista lateral Vue latérale



Altezza Height Altura Hauteur 904 mm





**IT** La venditrice, nel perseguire una politica volta al costante miglioramento, si riserva il diritto di apportare, in qualsiasi momento e senza preavviso, le modifiche ai prodotti che riterrà utili e necessarie. L'effettiva disponibilità di quanto a catalogo, deve essere effettivamente verificata al momento dell'ordine. A causa di naturali limiti tecnici dei metodi di produzione e stampa, il colore dei modelli a catalogo è puramente indicativo e non può costituire motivo di rivalsa.

**EN** In order to constantly improve its products, the Seller reserves the right to modify its products as it sees fit, without prior notification. The effective availability of the articles in the catalogue must be actually checked out at the time of the order. Because of the natural technical limits of methods of reproduction and printing, the colour of the models in the catalogue are purely indicative and cannot be claimed as reason for compensation and legal action.

**ES** La vendedora, siguiendo una política orientada a la mejora constante, se reserva el derecho de introducir en los productos, en cualquier momento y sin previo aviso, las modificaciones que considere útiles y necesarias. La disponibilidad real de lo que figura en el catálogo debe verificarse efectivamente en el momento del pedido. Debido a las limitaciones técnicas naturales de los métodos de producción e impresión, el color de los modelos del catálogo es puramente indicativo y no puede constituir un motivo de recurso.

**FR** En poursuivant une politique d'amélioration constante, la vendeuse se réserve le droit d'apporter, à tout moment et sans préavis, les modifications aux produits qu'elle jugera utiles et nécessaires. La disponibilité réelle du catalogue doit être effectivement vérifiée au moment de la commande. En raison des limites techniques naturelles des méthodes de production et d'impression, la couleur des modèles à catalogue est purement indicative et ne peut constituer un motif de contestation.

Life is  
outside.

**OF outdoorkitchens**  
via Del Progresso 1, Calcinelli  
61036 Colli al Metauro - PU, Italia  
phone +39 0721 891907  
info@ofoutdoorkitchens.com  
[www.ofoutdoorkitchens.com](http://www.ofoutdoorkitchens.com)



outdoorkitchens